

# Skunk

## Effects:

Due to increased levels of THC (tetrahyracannabinol) the psychoactive ingredient, it has more potent effects such as:

- elation
- profound relaxation
- altered sense of time and space
- increased sociability and talkativeness
- heightened hallucinogenic effects
- the 'munchies' a strong desire to eat and keep eating.

## Risks:

- projectile vomiting
- anxiety attacks & paranoia
- increased heart rate & blood pressure
- increased risk of accidents
- affects concentration and ability to learn if used regularly
- slurred speech and memory loss when used habitually.



**"Skunk is the generic name often used by the press and police to describe a potent form of the cannabis plant. In fact Skunk is only one of 100 or so varieties of cannabis plant which have high levels of (THC). Skunk can be three times stronger than other forms of Cannabis."**

# Synthetic Cannabinoids

Synthetic cannabinoids are a collection of herbs or plant material which has been sprayed with chemicals that mimic the psychoactive effects of THC (tetrahydrocannabinol) and produce a cannabis-like effect when smoked.

The drug is often marketed under the name of Spice such as 'Spice Gold' or 'Spice Diamond', or under other names such as 'Black Mamba', 'Exodus Damnation', 'Annihilation', 'Clockwork Orange' and so on. China and the Far East appear to be the main areas for production.

Synthetic Cannabinoids may be more harmful than Cannabis, due to their method of manufacture and the

fact that the compounds used and their strength varies between samples. Evidence indicates that synthetic cannabinoids can be anything up to ten times stronger than the THC found in cannabis plants. Given the product's inconsistency, the user has no idea what they are buying. Packets of these drugs can contain anything between 0.2% and 3% Cannabinoid.

## Effects:

- Euphoria
- Relaxation
- Hallucinations.

## Risks:

- Raised pulse
- Dry mouth
- Dizziness and sickness
- Reduced inhibition resulting in risk taking behaviour
- Agitation and paranoia.



# The law and penalties

From 23 December 2009, synthetic cannabinoids were classified alongside Cannabis as a Class B drug under the Misuse of Drugs Act 1971.

## Possession

**C H.M.Prison**  
2 years and/or fine

**B H.M.Prison**  
5 years and/or fine

**A H.M.Prison**  
7 years and/or fine

## Possession with intent to supply/supply manufacture or cultivation

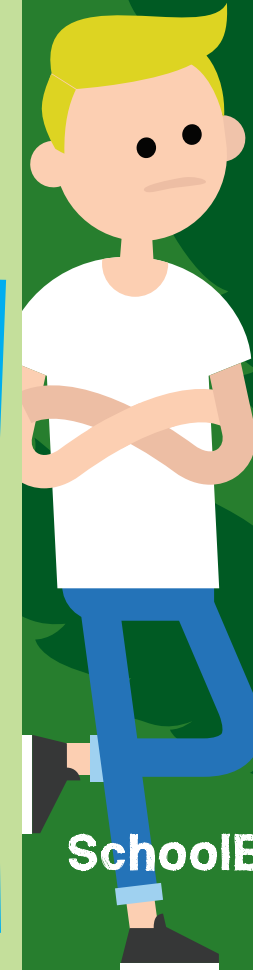
**H.M.Prison**  
14 years and/or unlimited fine/seizure of assets

**H.M.Prison**  
14 years and/or unlimited fine/seizure of assets

**H.M.Prison**  
Life and/or unlimited fine/seizure of assets

# Canabis...

Mae Canabis yn gyffur Dosbarth B sy'n deillio o'r planhigyn canabis - planhigyn perthog sy'n tyfu'n wyllt yn y rhan helaeth o'r byd ac yn hawdd i'w dyfu ym Mhrydain.



SchoolBeat.cymru

# Sgync

## Effeithiau:

O ganlyniad i lefelau uwch o THC (tetrahyracannabinol) y cynhwysyn seicoweithredol, mae ganddo effeithiau mwy nerthol megis:

- gorfoledd
- ymlacio dwfn
- ymdeimlad gwahanol o amser a gofod
- bod yn fwy cymdeithasol a siaradus
- effeithiau rhithweledigaethol uwch
- y 'sglaffio' - dyhead cryf i fwyta ac i barhau i fwyta.

## Risgiau:

- chwydu hyrddiol
- ymosodiadau garbryder a pharanoia
- curiad calon yn cyflymu a phwysau gwaed yn codi
- risg uwch o ddamweiniau
- effeithio ar y gallu i ganolbwyntio a'r gallu i ddysgu os yw'n cael ei ddefnyddio'n rheolaidd
- siarad yn aneglur a cholli cof wrth gael ei ddefnyddio'n gyson.



**"Sgync yw'r term cyffredinol sy'n aml yn cael ei ddefnyddio gan y wasg a'r heddlu i ddisgrifio math nerthol o'r planhigyn cannabis. Yn wir, mae sgync ond yn un o tua 100 o fathau o'r planhigyn cannabis sydd â lefelau uchel o THC. Gall Sgync fod dair gwaith yn gryfach na mathau eraill o Ganabis."**

## Canabinoidau Synthetig

Casgliad o berlysiâu neu ddeunyddiau planhigion yw Canabinoidau Synthetig sydd wedi cael eu chwistrellu â chemegolion sy'n dynwared effeithiau seicoweithredol THC (tetrahydrocannabinol) ac yn cynhyrchu effaith debyg i ganabis wrth ei ysmegu.

Mae'r cyffur yn aml yn cael ei farchnata o dan enw Spice megis 'Spice Gold' neu 'Spice Diamond', neu o dan enwau eraill megis 'Black Mamba', 'Exodus Damnation', 'Annihilation', 'Clockwork Orange' ac yn y blaen. Ymddengys mai Tseina a'r Dwyrain Pell yw'r prif ardaloedd cynhyrchu.

Gall Canabinoidau Synthetig fod yn fwy niweidiol na Cannabis, o ganlyniad i'r dull o'u gweithgynhyrchu a'r

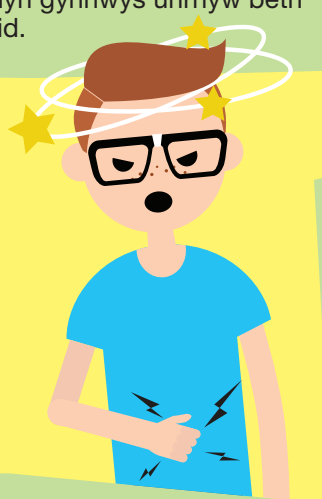
ffaith fod y cyfansoddion a ddefnyddir a'u cryfder yn amrywio rhwng samplau. Mae tystiolaeth yn awgrymu y gall canabinoidau synthetig fod hyd at ddeg gwaith yn gryfach na'r THC sy'n cael ei ganfod mewn planhigion cannabis. O ystyried anghysondeb y cynnyrch, does gan y defnyddiwr ddim syniad beth maent yn ei brynu. Gall pecynnau o'r cyffuriau hyn gynnwys unrhyw beth rhwng 0.2% a 3% Canabinoid.

## Effeithiau:

- Gorfoledd
- Ymlacio
- Rhithwelediadau.

## Risgiau:

- Pwls uwch
- Ceg sych
- Pendro a theimlo'n sâl
- Lleihad mewn ataliaeth yn arwain at gymryd risgiau
- Aflonyddwch a pharanoia.



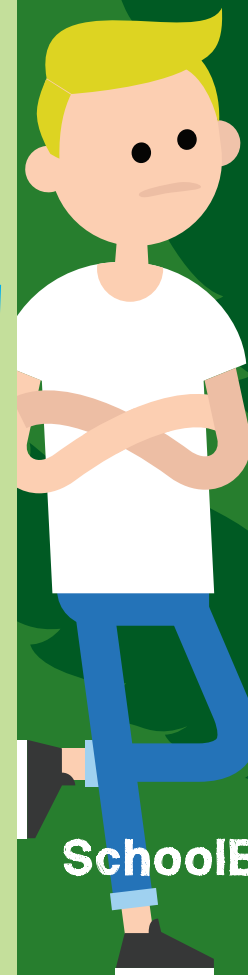
## Y gyfraith a chosbau

O 23 Rhagfyr 2009, cafodd canabinoidau synthetig eu dosbarthu ochr yn ochr â Cannabis fel cyffur Dosbarth B o dan Ddeddf Camddefnyddio Cyffuriau 1971.

Meddiant		Meddiant gyda'r bwriad o gyflenwi/cyflenwi gweithgynhyrchu neu dyfu	
<b>C</b>	<b>Carchar EM</b> 2 flynedd a/neu ddirwy	<b>Carchar EM</b> 14 mlynedd a/neu ddirwy diderfyn/atafael eiddo	
<b>B</b>	<b>Carchar EM</b> 5 mlynedd a/neu ddirwy	<b>Carchar EM</b> 14 mlynedd a/neu ddirwy diderfyn/atafael eiddo	
<b>A</b>	<b>Carchar EM</b> 7 mlynedd a/neu ddirwy	<b>Carchar EM</b> Bywyd a/neu ddirwy diderfyn/atafael eiddo	

# Cannabis...

**Cannabis is a Class B drug derived from the cannabis plant, a bushy plant found wild in most parts of the world and easily cultivated in Britain.**



SchoolBeat.cymru