

Gangs from large urban areas such as **London**, **Birmingham** and **Liverpool**, travel to smaller locations to sell Heroin and Crack-Cocaine. These gangs are operating in Wales.

Gang members or low level **runners** travel between the urban location and Wales on a **regular** basis to deliver **drugs** and collect **cash**.

Gangs **exploit** children to deliver drugs from the urban area to the county location using **intimidation**, **violence**, **debt bondage** and/or **grooming**.

Children and young people are vulnerable to being recruited by these gangs.



“What we find, time and again, is that early identification is paramount to safeguarding young & vulnerable people, and identifying and tackling gang/group exploitation.”

Saferlondon

Children and young people are vulnerable to being recruited by these gangs.

Signs to watch out for:

- **Persistently going missing from school or home and/or being found out-of-area.**
- **Unexplained acquisition of money, clothes, or mobile phones.**
- **Excessive receipt of texts/phone calls.**
- **Relationships with controlling/older individuals or groups.**
- **Leaving home/care without explanation.**
- **Suspicion of physical assault/unexplained injuries.**
- **Parental concerns.**
- **Carrying weapons.**
- **Significant decline in school results/performance.**
- **Gang association or isolation from peers or social networks.**
- **Self-harm or significant changes in emotional well-being.**
- **Signs of substance misuse.**

Concerned?

What should you do?

Any practitioner working with a vulnerable child or other person who they think may be at risk of county lines exploitation should follow their local safeguarding guidance and share this information with their local authority social services.

If you believe a person is in immediate risk of harm, you should contact the police.



Guidance

https://www.gov.uk/government/uploads/system/uploads/attachment_data/file/626770/6_3505_HO_Child_exploitation_FINAL_web__2_.pdf



Home Office

Problem Ffiniau Sirol...



SchoolBeat.cymru

Mae gangiau o ardaloedd trefol mawr fel **Llundain, Birmingham a Lerpwl**, yn teithio i leoliadau llai i werthu Heroin a Crac-cocên. Mae'r gangiau hyn yn gweithredu yng Nghymru.

Mae aelodau gangiau neu eu rhedwyr yn teithio'n rheolaidd rhwng y lleoliad trefol a Chymru i gyflenwi cyffuriau a chasglu arian parod.

Mae gangiau'n **cam-fanteisio** ar blant i gyflenwi cyffuriau o'r ardal drefol i'r lleoliad gwledig yn defnyddio bygythion, trais, caethiwed oherwydd dyled a/neu drwy feithrin perthynas amhriodol.

Mae plant a phobl ifanc yn agored i gael eu recriwtio gan y gangiau hyn.



“Yr hyn a ganfyddwn, dro ar ôl tro, yw'r ffaith fod adnabyddiaeth gynnar yn hollbwysig i ddiogelu pobl ifanc sy'n agored i niwed a nodi a mynd i'r afael â cham-fanteisio gan gangiau/grwpiau.”

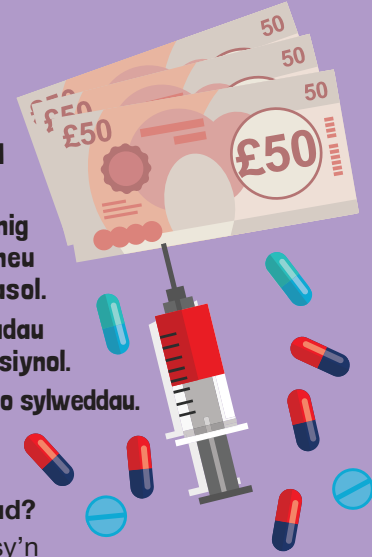
Saferlondon

2727-19 Dylunwyd ac Argraffwyd gan Argraffu HDC

Mae plant a phobl ifanc yn agored i gael eu recriwtio gan y gangiau hyn.

Arwyddion i fod yn wyladwrus ohonynt:

- Unigolyn yn mynd ar goll o'r ysgol neu'r cartref yn gyson a / neu'n cael ei ganfod y tu allan i'r ardal.
- Bod ag arian, dillad neu ffonau symudol heb esboniad.
- Derbyn gormodiaeth o negeseuon testun / galwadau ffôn.
- Perthnasau gydag unigolion neu grwpiau gormesol / hŷn.
- Gadael cartref / gofal heb esboniad.
- Amheuaeth o ymosodiad corfforol / anafiadau heb esboniad.
- Pryderon rhieni.
- Cario arfau.
- Dirywiad sylweddol o ran canlyniadau / perfformiad yn yr ysgol.
- Cysylltiad â gang neu'n unig ac ar wahân i gyfoedion neu rwydweithiau cymdeithasol.
- Hunan-niwed neu newidiadau sylweddol mewn lles emosiynol.
- Arwyddion o gamddefnyddio sylweddau.



Pryderus?

Beth ddylech chi ei wneud?

Dylai unrhyw ymarferydd sy'n gweithio gyda phlentyn neu unigolyn agored i niwed arall y maen nhw'n credu efallai eu bod mewn perygl o gam-fanteisio dros ffiniau sirol ddilyn eu canllawiau diogelu lleol a rhannu'r wybodaeth hon gyda gwasanaethau cymdeithasol eu hawdurdod lleol.

Os ydych chi'n meddwl bod unigolyn mewn perygl uniongyrchol o niwed, dylech gysylltu â'r Heddlu.



Home Office

Canllawiau'r Swyddfa Gartref

https://www.gov.uk/government/uploads/system/uploads/attachment_data/file/626770/6_3505_HO_Child_exploitation_FINAL_web_2_.pdf

The problem of County Lines...



SchoolBeat.cymru